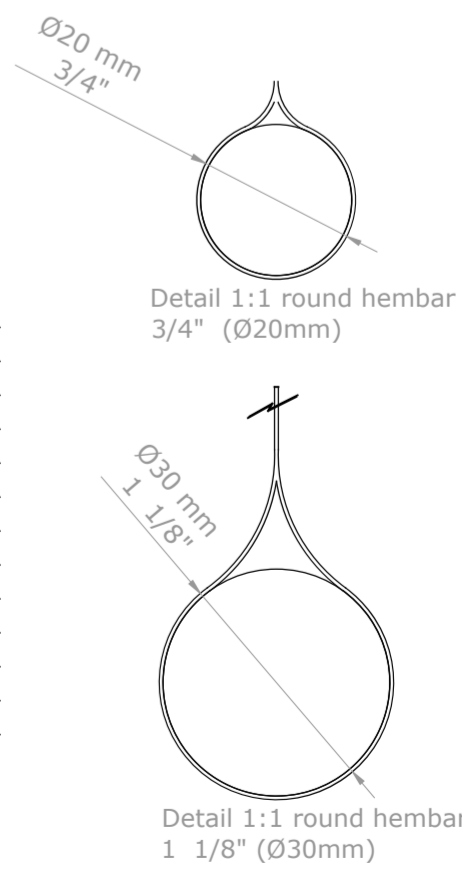
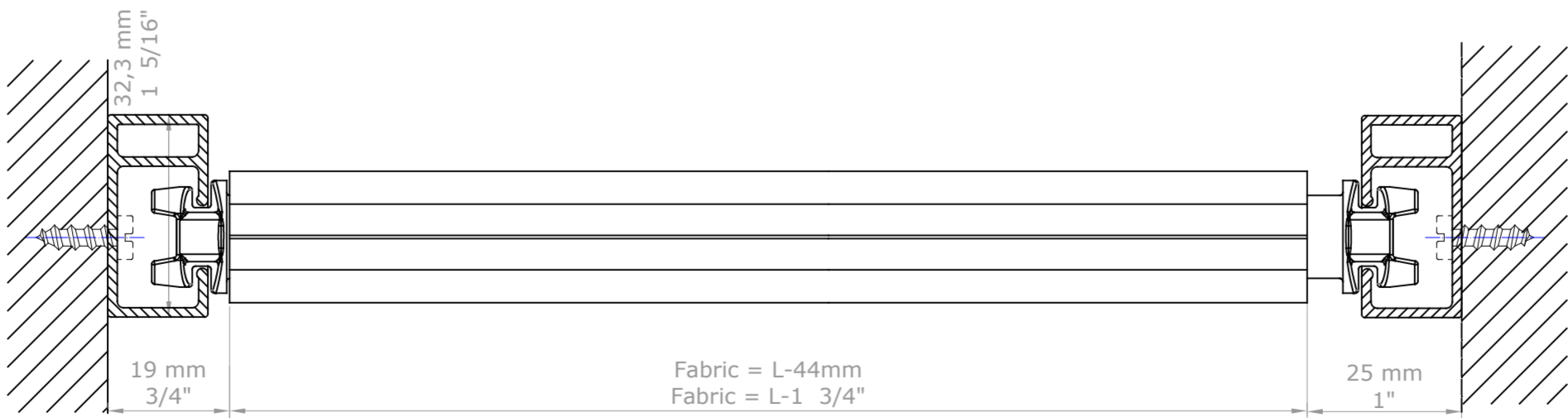
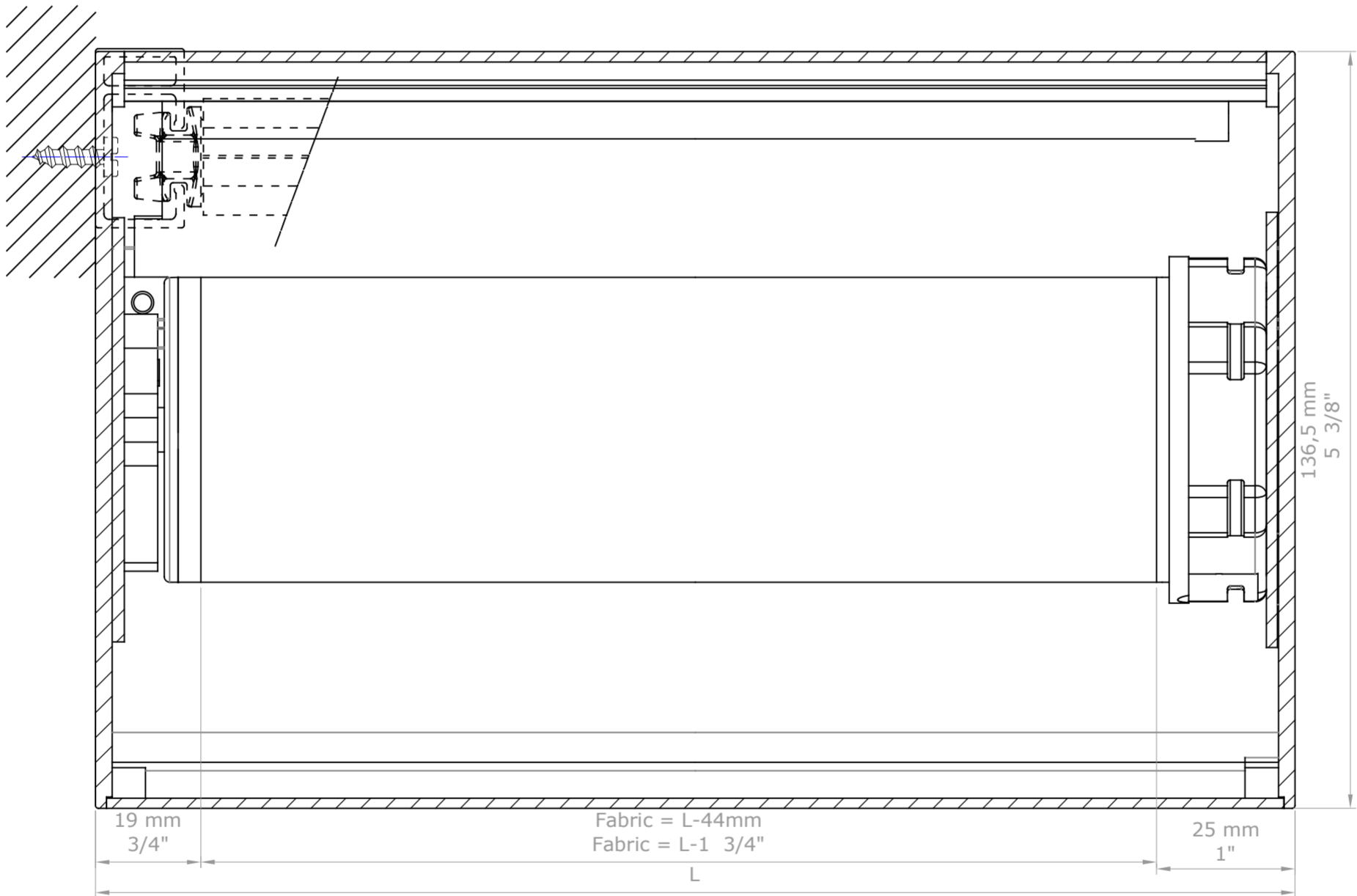
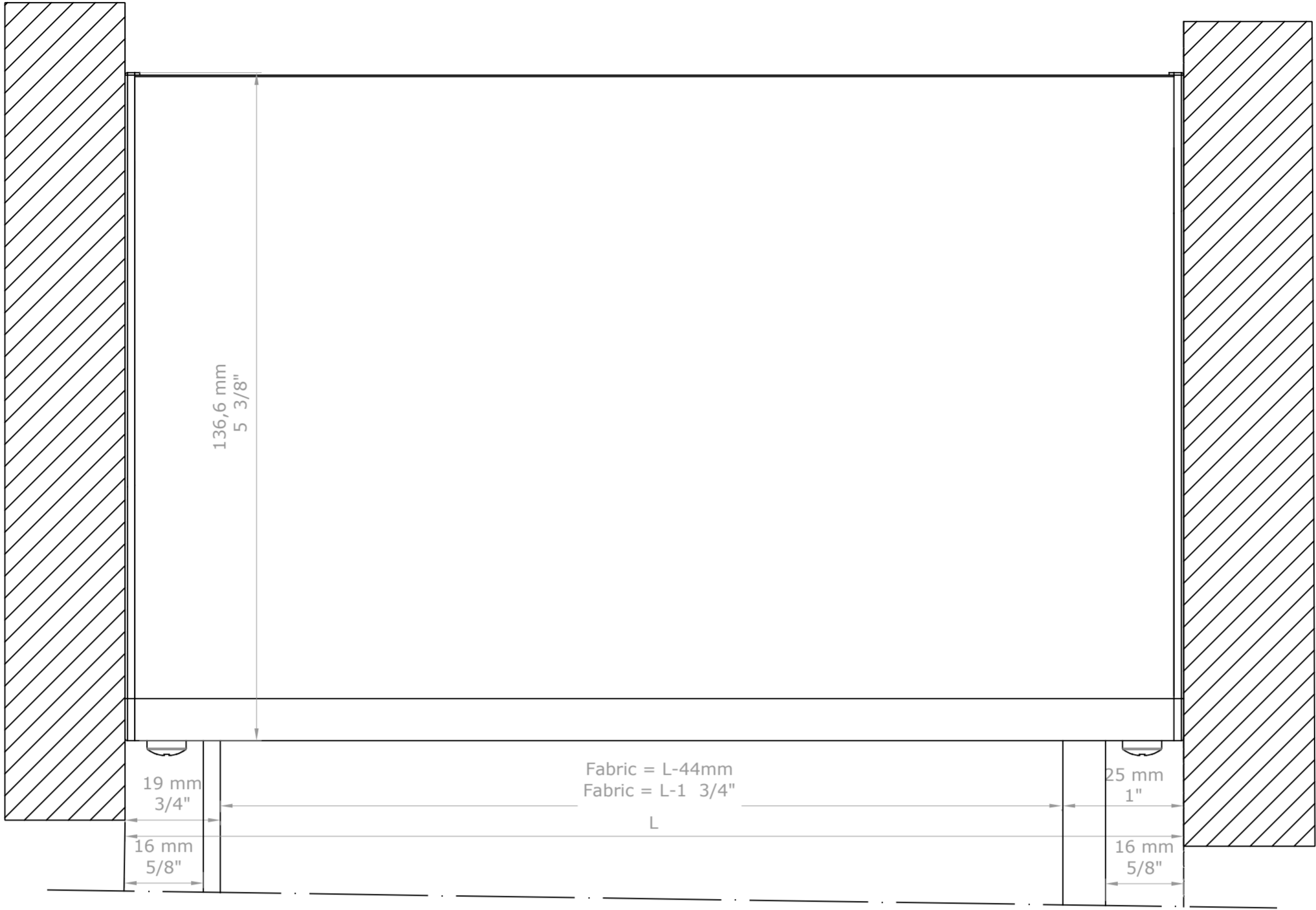
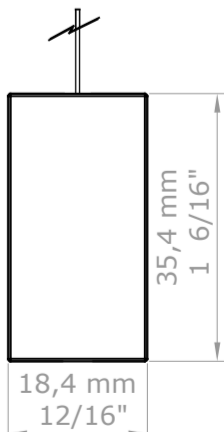
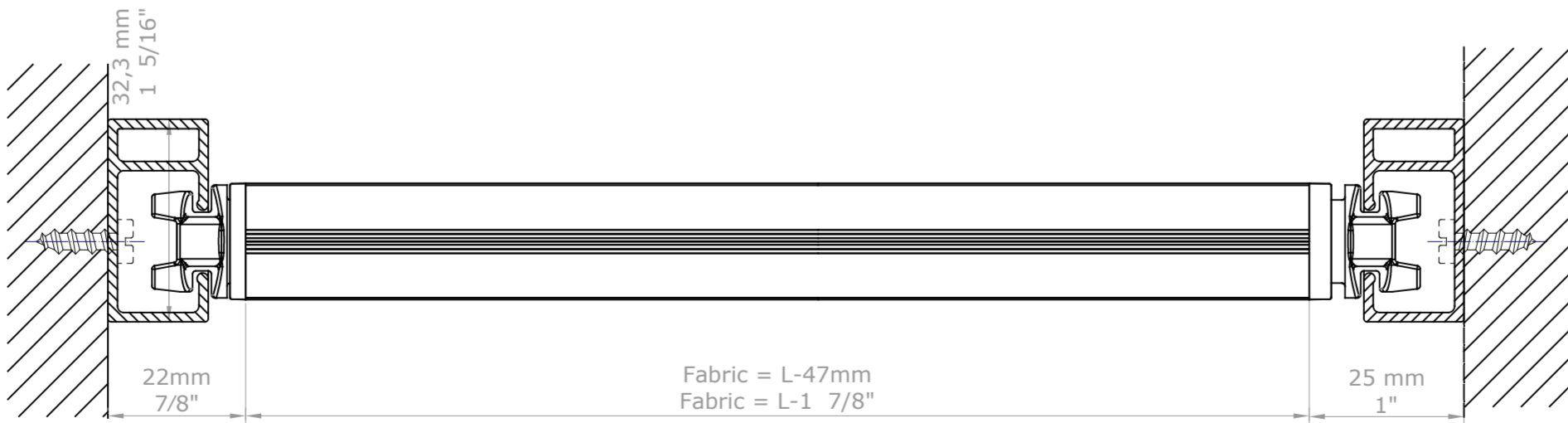
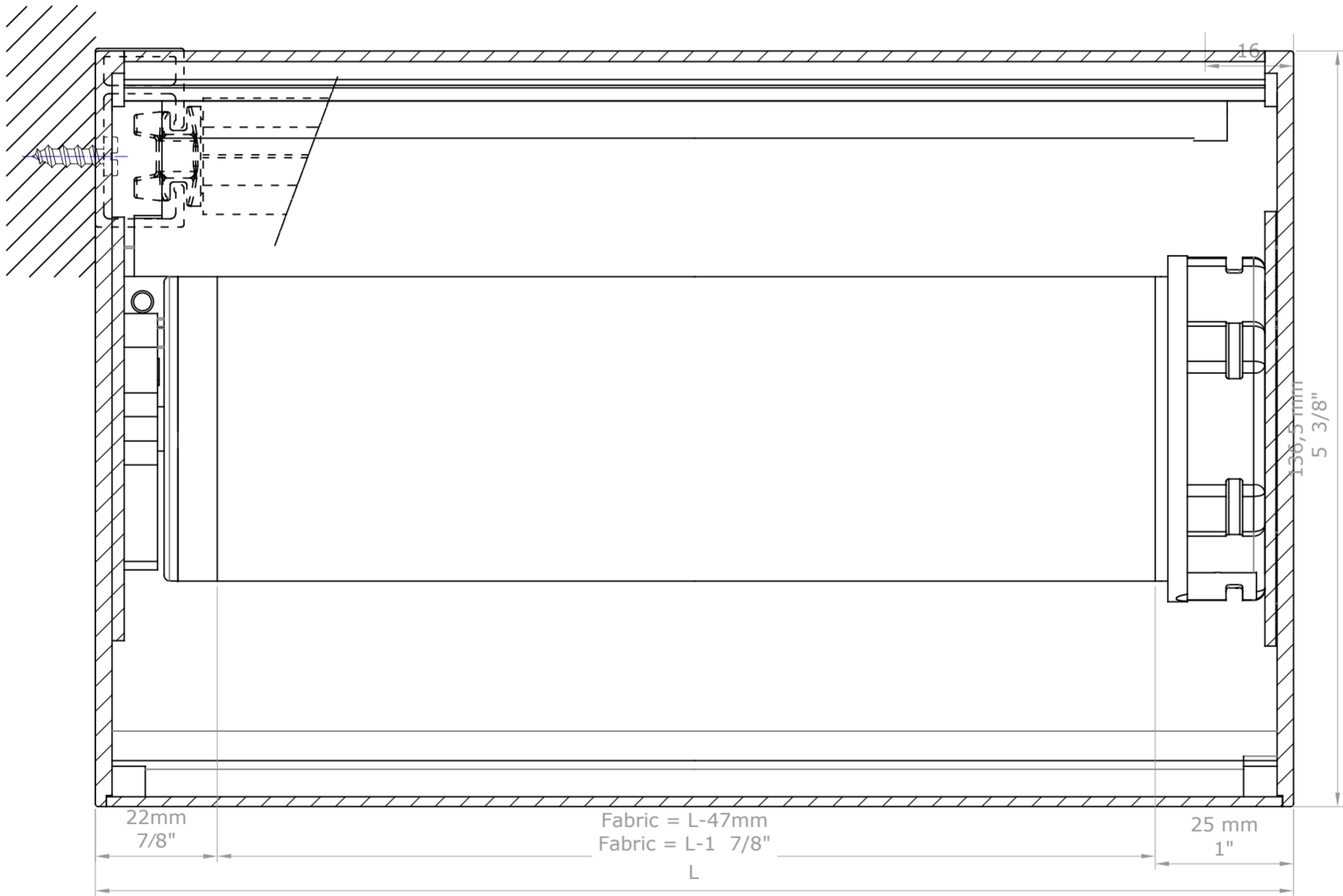
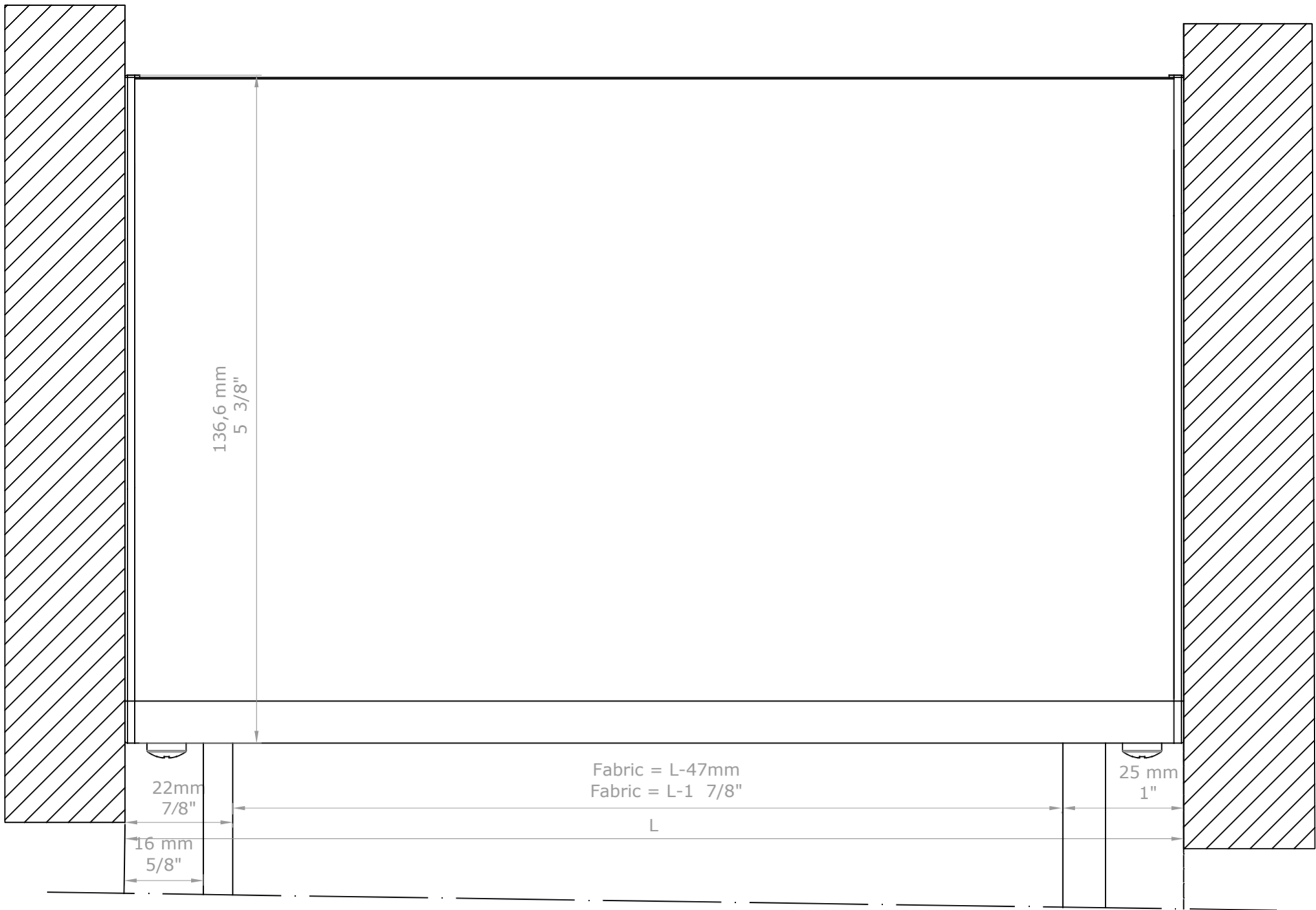


D. REVIS.		BANDALUX	
REVISION	123456789		
DATE	12-01-2018	PLANE N°	
DESIGN	Miquel P.	FORMAT	A-3
SCALE	Rolling blind in Box B-Box 5" motor U-301 guided Aluminum side channel guided lateral installation Mechanism: Motor 50 Bottom rail: Round hembar 3/4" (Ø20mm) Tube 2 9/16" (Ø65mm)		
1/1			

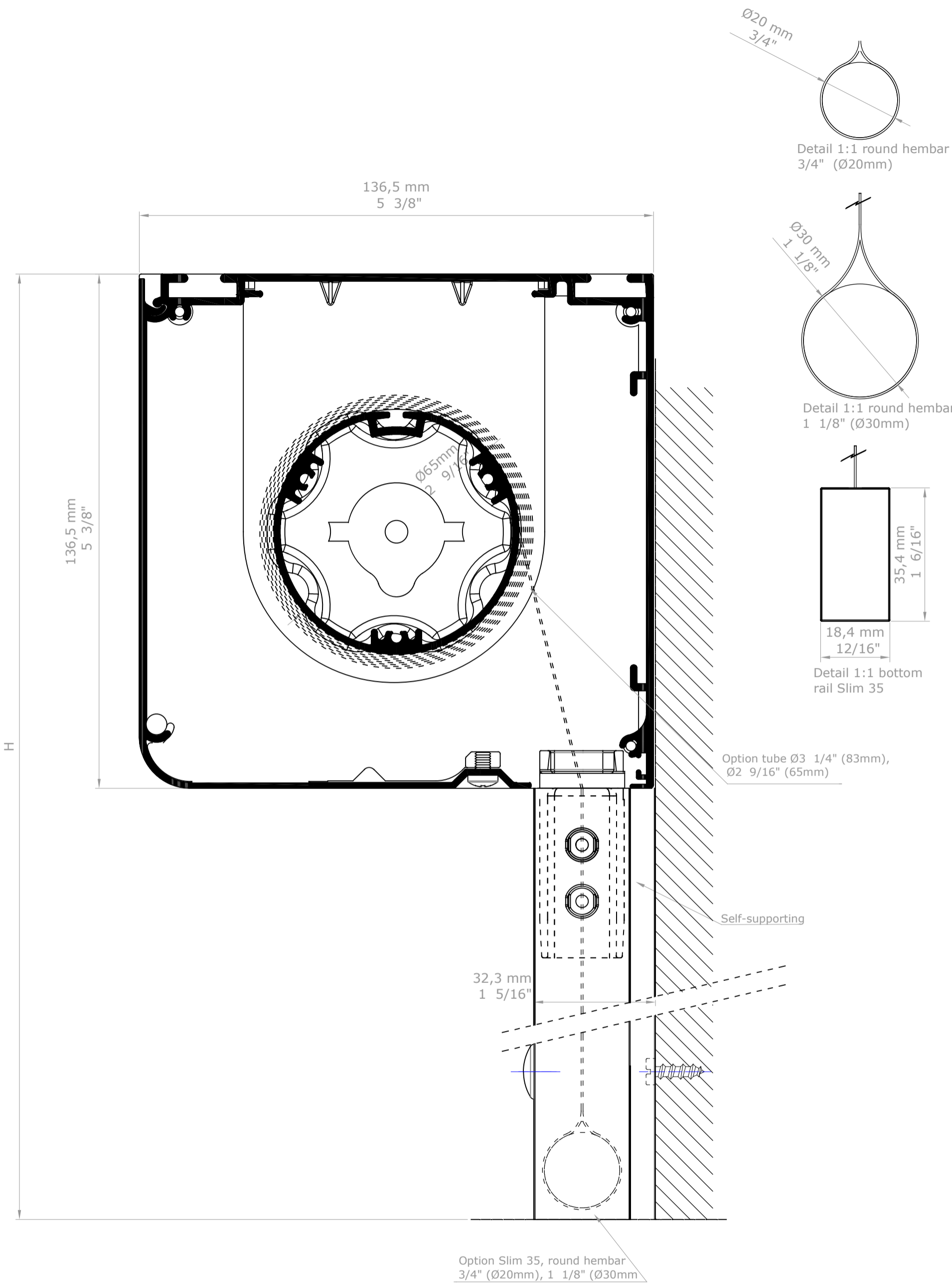


D. REVIS.		BANDALUX	
REVISION	123456789		
DATE	12-01-2018	PLANE Nº	
DESIGN	Miquel P.	FORMAT	A-2
SCALE	Rolling blind in Box B-Box 5" motor U-301 guided Aluminum side channel guided lateral installation Mechanism: Motor 50 Bottom rail: Round hembar 3/4" (Ø20mm) Tube 2 9/16" (Ø65mm)		
1/1			

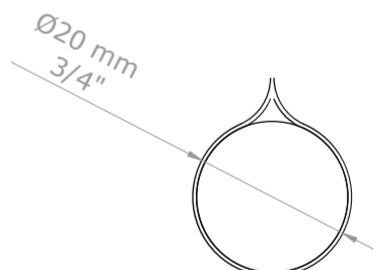
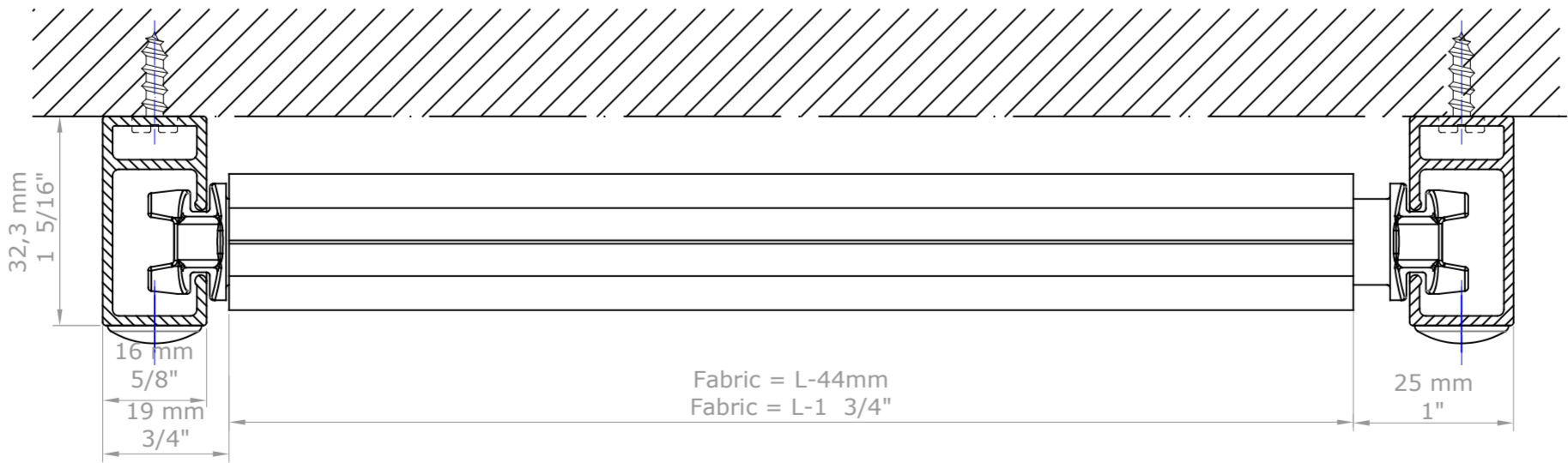
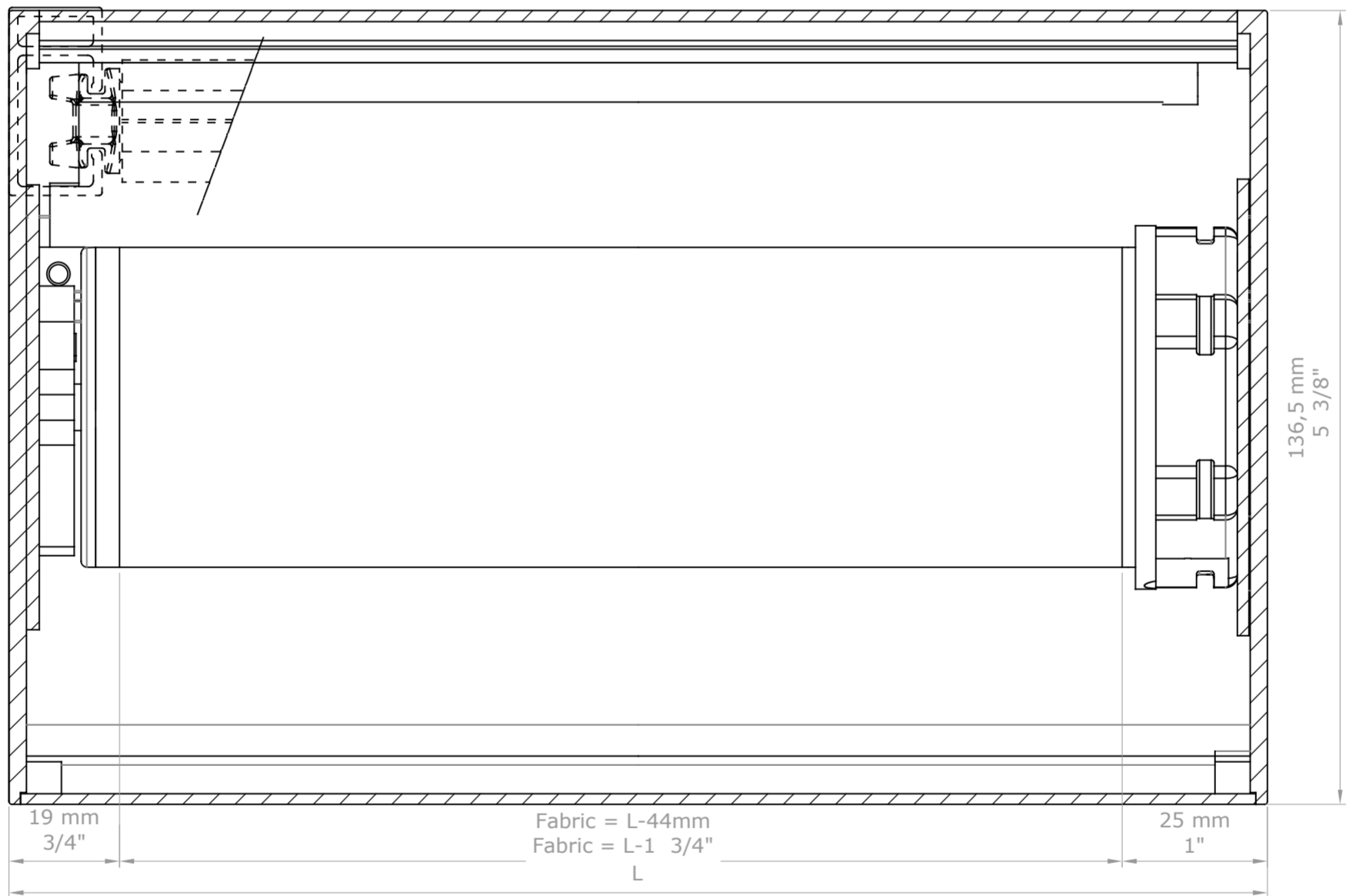
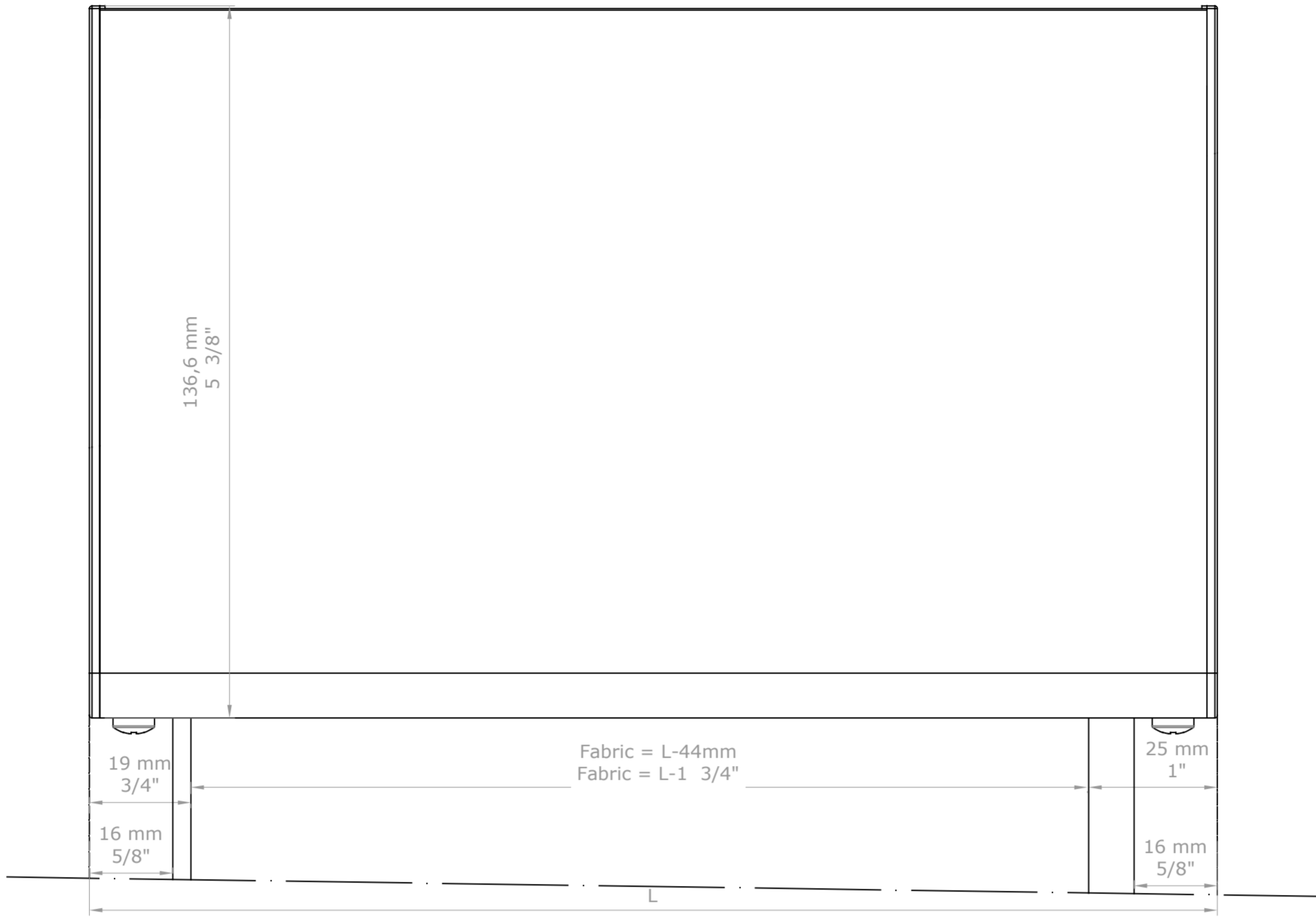


Detail 1:1 bottom rail Slim 35

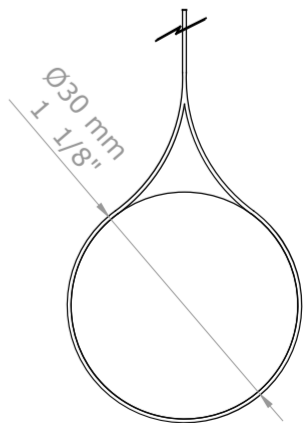
D. REVIS.		BANDALUX	
REVISION	123456789		
DATE	12-01-2018	PLANE N°	
DESIGN	Miquel P.	FORMAT	A-2
SCALE	Rolling blind in Box B-Box 5" motor U-301 guided Aluminum side channel guided lateral installation Mechanism: Motor 50 Bottom rail: Slim 35 Tube 2 9/16" (Ø65mm)		
1/1			



D. REVIS.		BANDALUX	
REVISION	123456789		
DATE	12-01-2018	PLANE N°	
DESIGN	Miquel P.	FORMAT	A-3
SCALE	Rolling blind in Box B-Box 5" motor U-301 guided Aluminum side channel guided front installation Mechanism: Motor 50 Bottom rail: Round hembar 3/4" (Ø20mm) Tube 2 9/16" (Ø65mm)		
1/1			

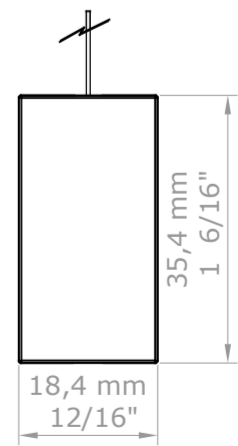
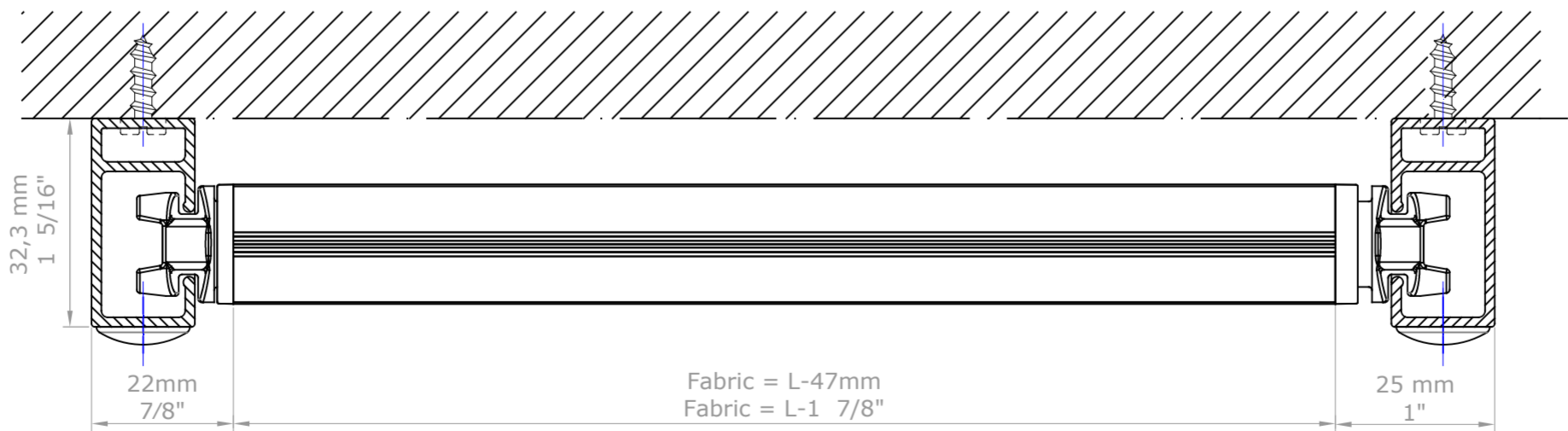
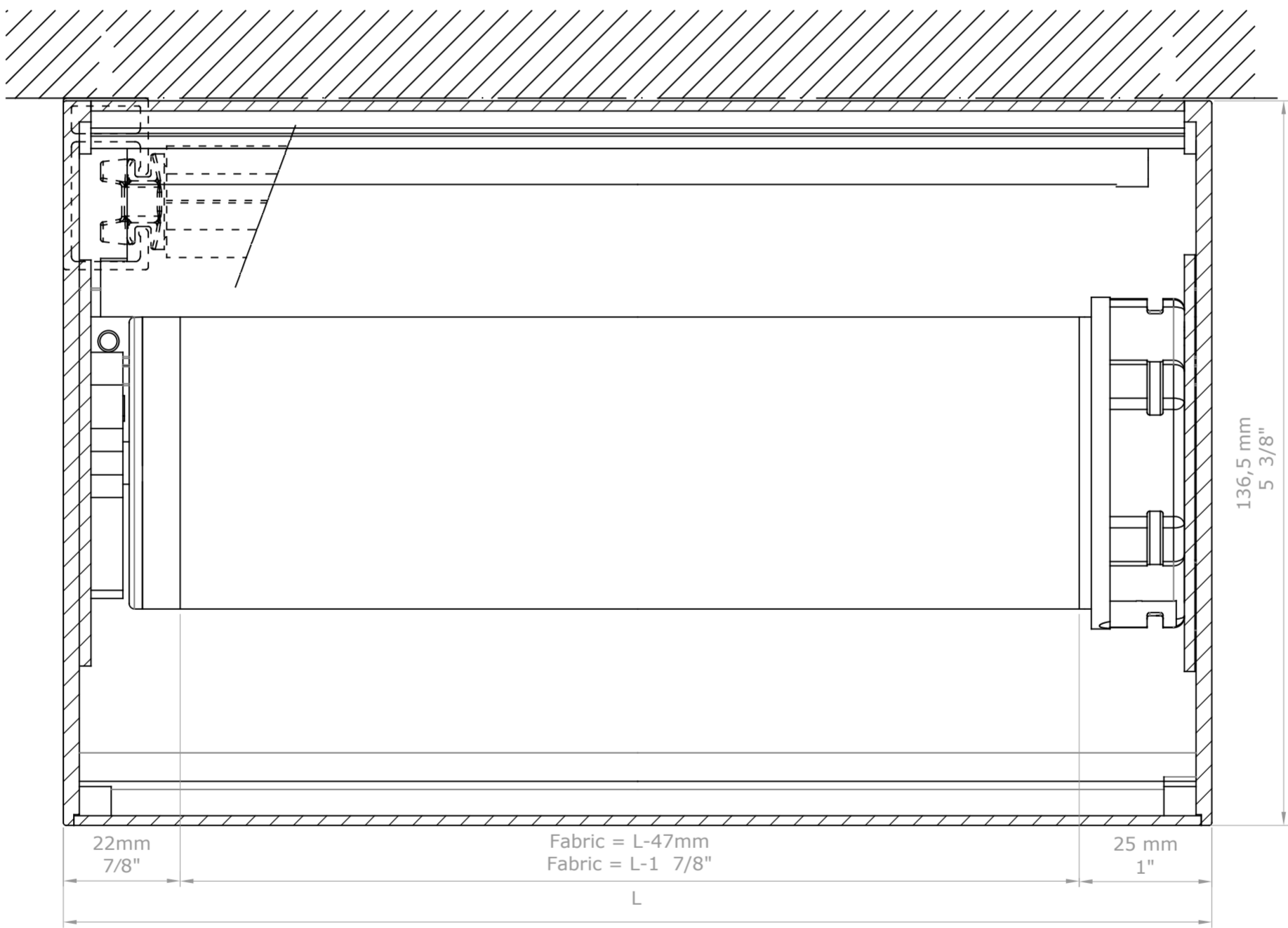
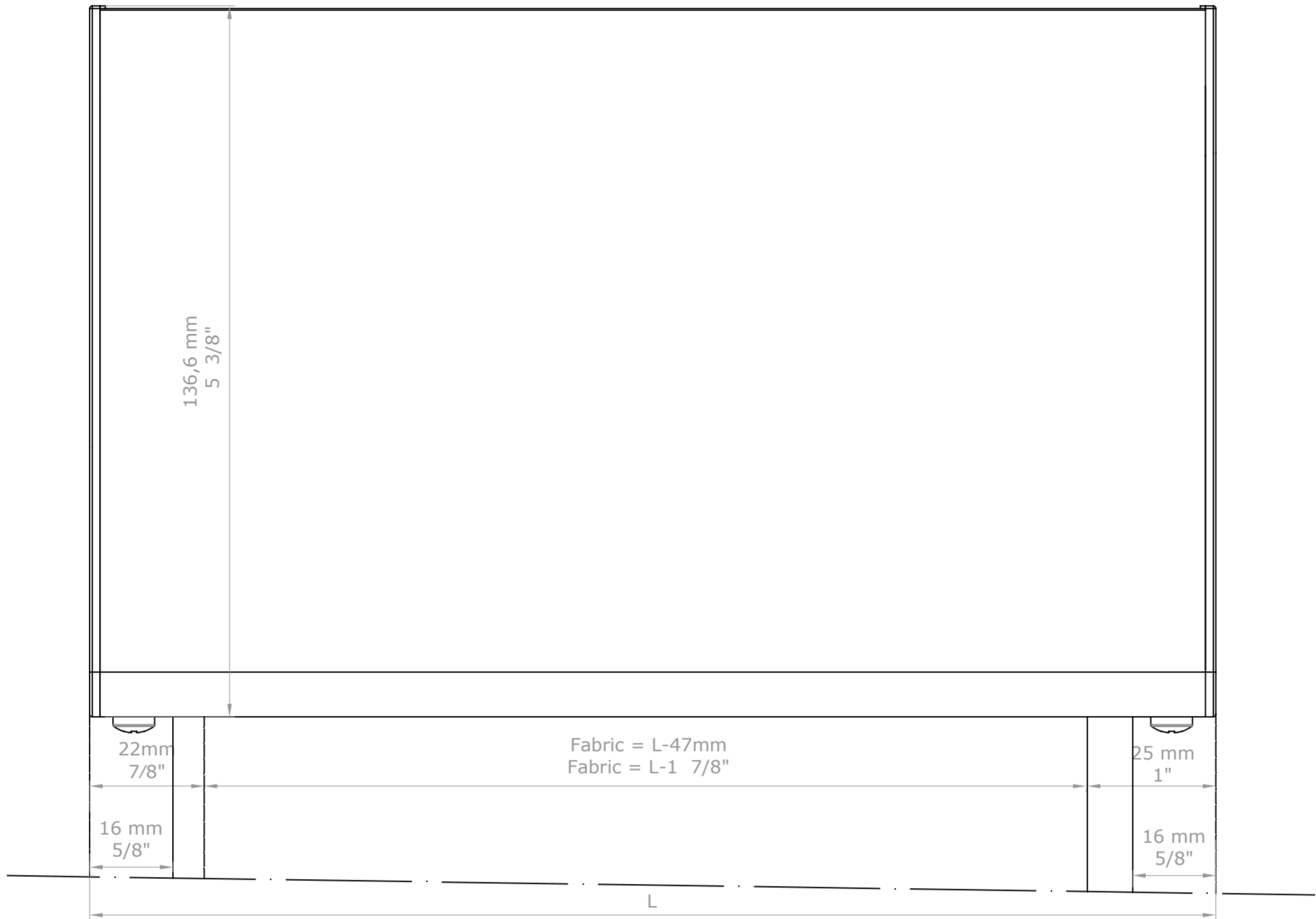


Detail 1:1 round hembar
3/4" (Ø20mm)



Detail 1:1 round hembar
1 1/8" (Ø30mm)

D. REVIS.	BANDALUX		
REVISION			
DATE	12-01-2018	PLANE Nº	
DESIGN	Miquel P.	FORMAT	A-2
SCALE	Rolling blind in Box B-Box 5" motor U-301 guided Aluminum side channel guided front installation Mechanism: Motor 50 Bottom rail: Round hembar 3/4" (Ø20mm) Tube 2 9/16" (Ø65mm)		
1/1			



Detail 1:1 bottom rail Slim 35

D. REVIS.		BANDALUX	
REVISION	123456789		
DATE	12-01-2018	PLANE N°	
DESIGN	Miquel P.	FORMAT	A-2
SCALE	Rolling blind in Box B-Box 5" motor U-301 guided Aluminum side channel guided front installation Mechanism: Motor 50 Bottom rail: Slim 35 Tube 2 9/16" (Ø65mm)		
1/1			